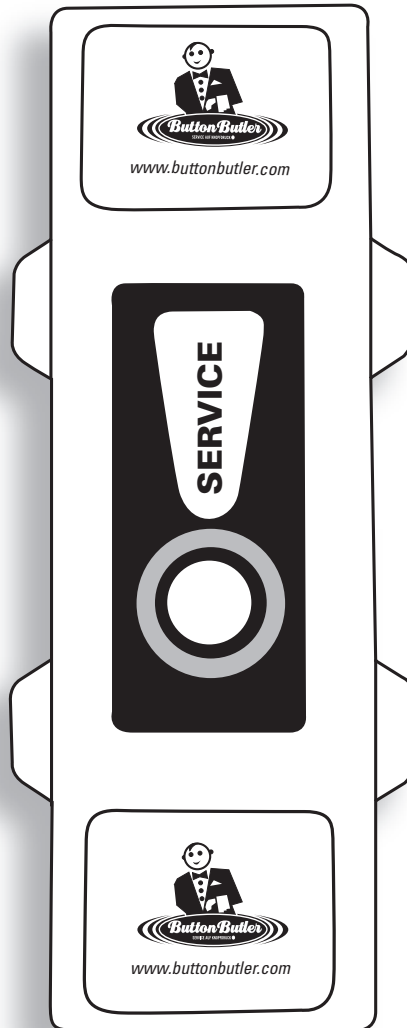


Button Butler

Paging System Transmitter

Software User Guide



Installation, Warranty and Service Information

Rev 6.48 – June 2008



Long Range Systems, Inc.

4550 Excel Parkway, Suite 200

Addison, TX 75001

800.437.4996 • www.pager.net

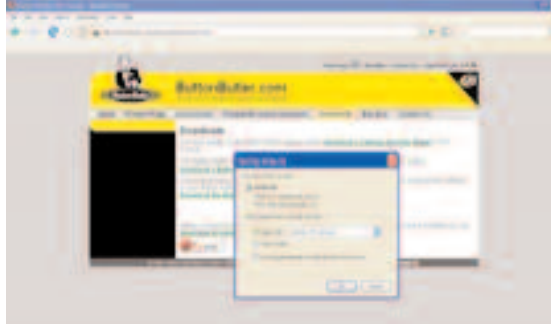
Table Of Contents

Install Programmer2
Launch Button Butler Application4
Read Butler5
Configuring a Button Butler5
Button Setup5
System ID6
Group Paging Enable6
Beep Enable7
Secondary Paging7
Cancel Message8
Low Battery Page8
Repaging9
Stop Re-Paging9
Save a Configuration10
Load an Existing Configuration10
Programming Pagers11
Group Pagers12
Troubleshooting13
Warranty14

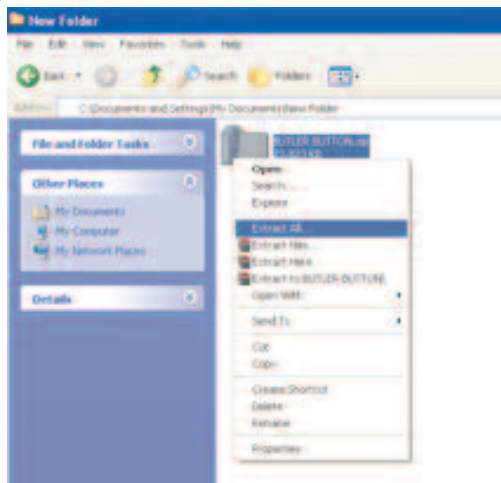
Install Programming Software

Follow these steps to download the programming software onto your PC.

1. Go to <http://buttonbutler.com/downloads/downloads.html>.
2. Click on the "Download the Button Butler programming software" link.

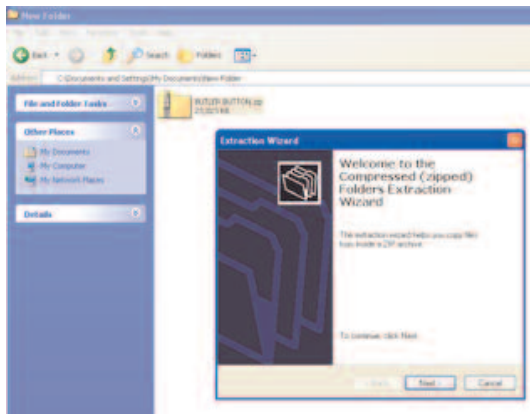


Choose what you would like to do with the file, (open it with another program (select program) or save it on the PC) and press OK.

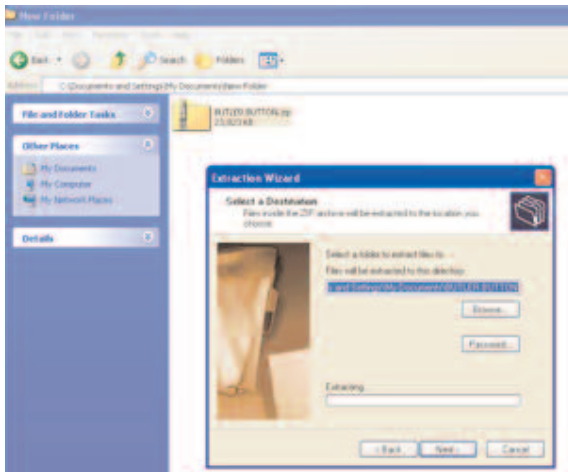


If file is saved on the PC:

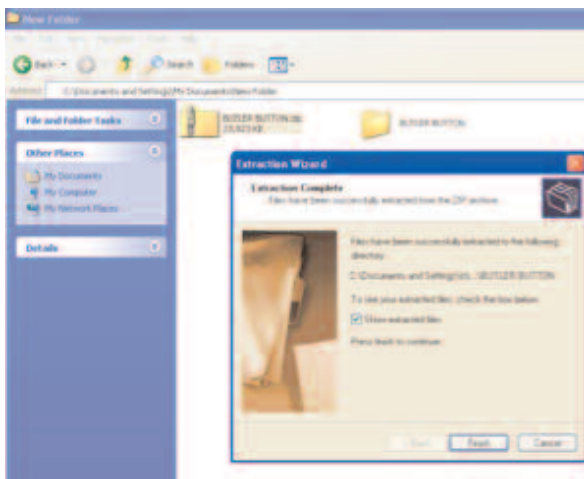
Select The Zip File and right click. On the drop down menu choose Extract All.



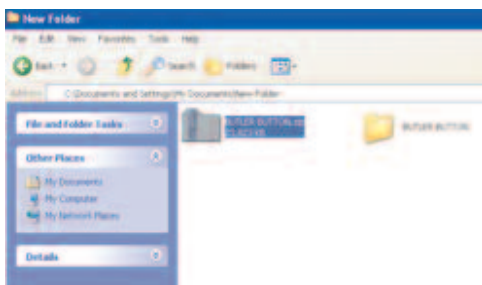
At the extraction wizard pop-up box, click NEXT to continue.



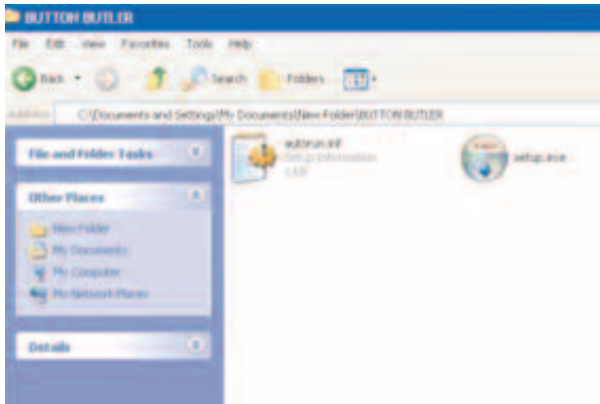
Select a destination/folder on your PC to extract the files to and click NEXT.



Check the box labeled “Show extracted files” if you would like to see your extracted files after the process is complete. Click “Finish” to complete extraction.



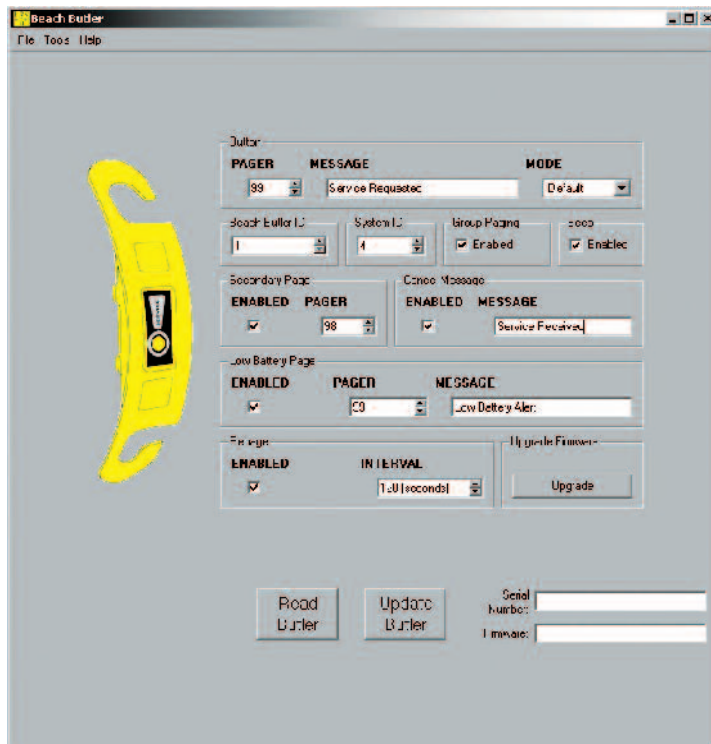
Double click on the folder located next to the Zip file.



1. Double click on the "Setup.exe" icon to run the Setup program.
2. Proceed with the installation wizard.

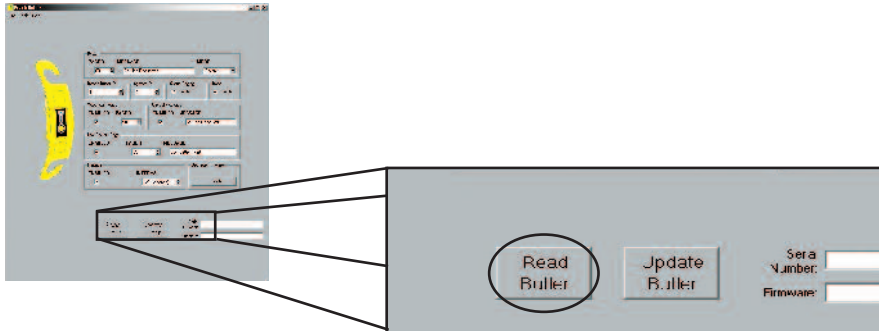
Launch Button Butler Application

1. At the Windows screen, go to the Start menu.
2. Select All Programs.
3. Select Beach Butler.
4. Select Butler Configurations Utility.
5. The Button Butler configurations screen will display.

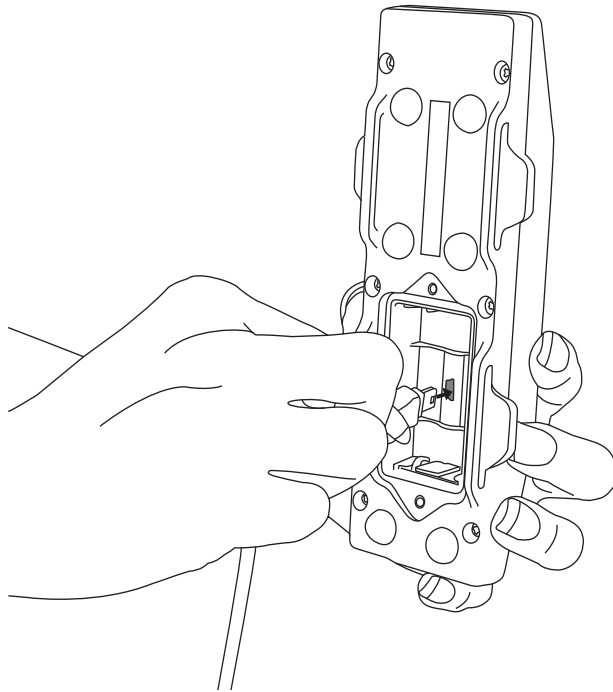


Read Butler

This feature reads the current configuration settings of the Butler. Unit Serial Number and current Firmware Version will display in the bottom right.



1. Connect one end of the USB cable to the PC.
2. Connect the other end of the USB cable to the Button Butler. The USB connection is located in the Button Butler's battery compartment. (Batteries are not required for programming).
3. Press the Read Butler button.



Configuring a Button Butler

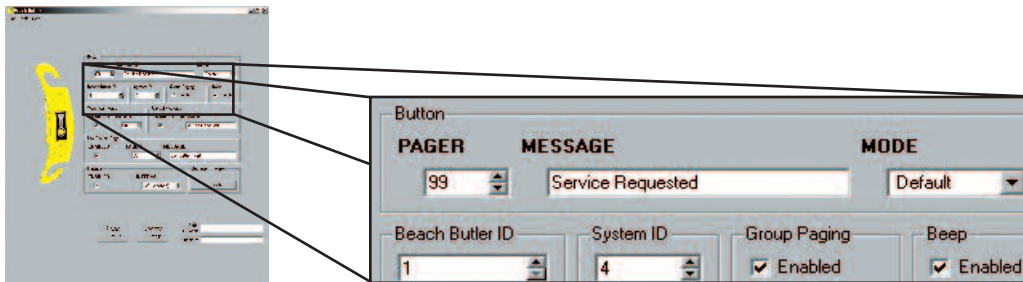


Note: Before configuration, the Button Butler must be connected to the PC using the USB cable.

- A configuration can be modified from a previously saved file, or manually created on screen.
- For any changes to take affect press the Update
- The Update Butler button must be pressed for changes to be applied.

Button Setup

The Button section is used to set the message sent to the pager when the “Service” button on the Button Butler is pressed.



To set a Message:

1. Under PAGER, enter the pager number that the “Service” button will page.
2. Under MESSAGE, enter the message to be sent to the pager.
3. From the MODE drop down box, select an alert mode.

Button Butler ID

The Button Butler ID is used to identify which Butler unit the service request came from.

Example: If the Button Butler ID is “5”, and the message is set to “Service”, then the pager message will display “**Service 5**”.

To set the Butler ID:

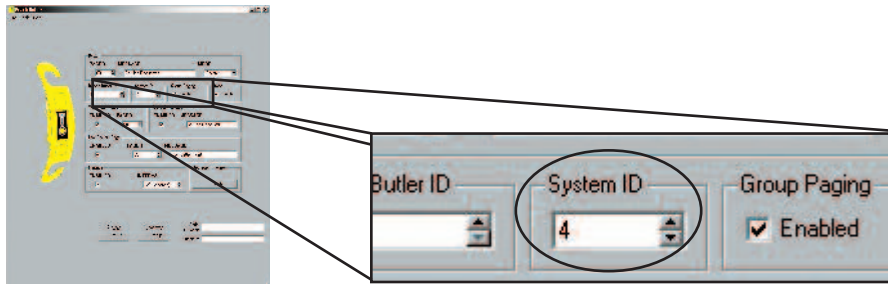
1. Enter the Button Butler ID number 1 to 9999.

System ID



Note: The System ID should be changed *ONLY* when interference occurs because of other LRS systems in nearby areas. Default System ID is 0.

In the event that more than one LRS system is in close geographical proximity, the system ID can be changed to avoid interference. If the System ID is changed, the System IDs of all pagers also need to be changed (updated) to the same System ID. Default System ID is 0.

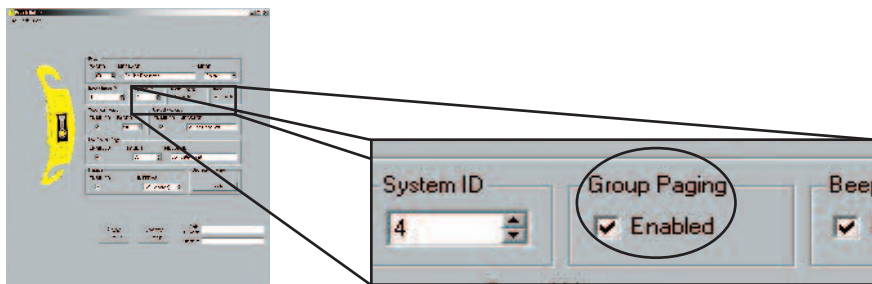


To set System ID:

1. From the **System ID** drop down box, select the ID number to use.
2. Click the **Update Butler** button to save the settings.
3. Reprogram pagers used with the system (refer to Programming Pagers on pg. 10).

Group Paging Enable

Group Paging allows you to page 2 or more pagers at the same time. You must program the pagers in the same group. (See Programming Pagers on pg. 13)

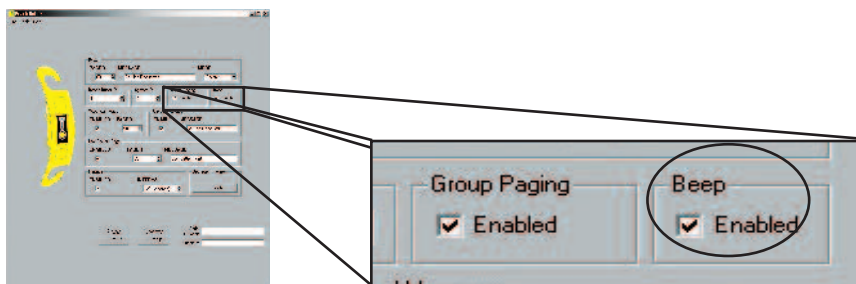


To enable Group Paging:

When group paging is enabled, pager numbers 1-99 will be used to page a "group". (See p. 10 to configure Group Paging settings)

Beep Enable

This feature will enable or disable the Butler from beeping when the "Service" button is pressed, and when the USB connection is made.



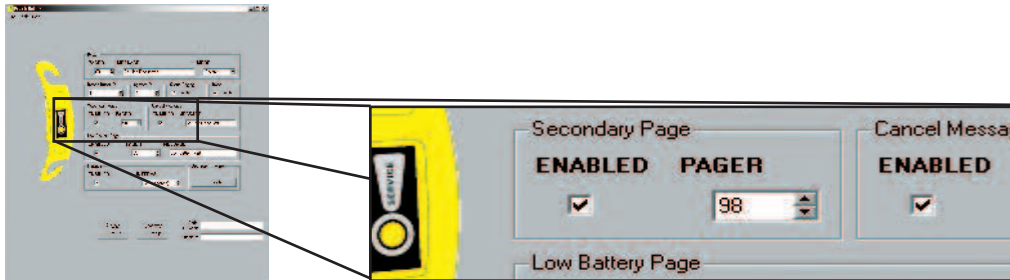
To set Beep:

Under **Beep**, click on the **Enabled** check box to enable or disable (a check mark indicates beep is enabled).

Secondary Paging

The Secondary Paging feature, when enabled, will send a message to a second pager after the third repage cycle. This feature is useful if you want a backup person to respond to a customer's request if the first person does not.

Example: Set Message to "Aisle", and Butler ID to "15". During repage, the main pager will display "Aisle 15". After the third repage, the secondary pager will display "Aisle 15".



To set Secondary Paging:

1. Enable and set Repaging (see p. 8).
2. Under Secondary Page, click on the Enabled check box to enable or disable (a check mark indicates secondary page is enabled).
3. From the **PAGER** drop down box, select the pager number that will receive the secondary page.



Note: If the Repage (p. 8) feature is enabled, the transmitter will repage the main pager at pre-set intervals until the page is cleared. (See Stop Re-paging, p. 8 for instructions on clearing the page).

Cancel Message



Note: Secondary Paging must be enabled (see p. 7).

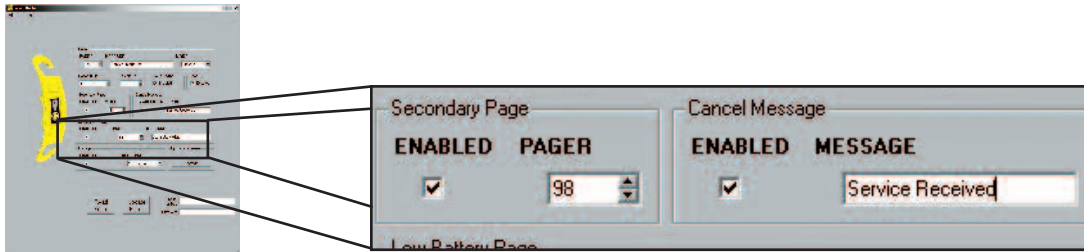
This feature will enable or disable sending a preset cancel message to pagers when a magnet resets the Button Butler.

Example:

- IF:**
1. Butler ID is set to "15"
 2. Cancel message is set to "Cancel"
 3. Butler is set to send message "Aisle" to the main pager
 4. "Service" button on Butler is pressed
 5. Pager displays "Aisle 15"
 6. The pager magnet is held over the "Service" button and repaging is stopped (see p. 11)

THEN: The secondary pager will display "Cancel Aisle 15".

If the page is stopped/canceled after the Secondary Pager goes off, the Secondary Pager will receive "Cancel Aisle 15". This is useful if using more than one pager, so the second person is notified.

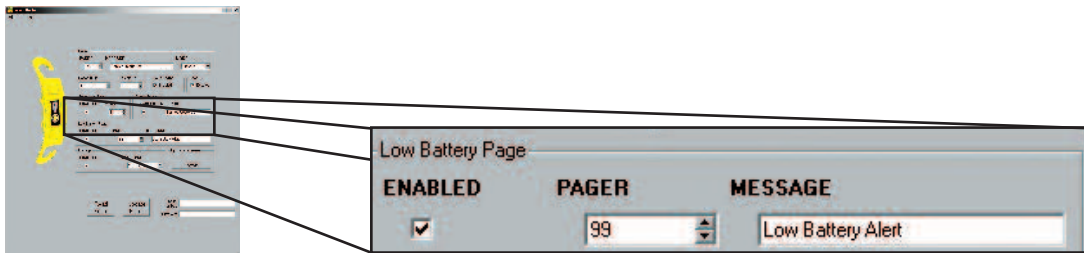


To set Cancel Message:

1. Click on the **Enabled** check box to enable or disable (a check mark indicates input is enabled.)
2. Enter a message.

Low Battery Page

This sends a message to the pager to add new batteries.



1. Under **Low Battery Page**, click on the **Enabled** check box to enable or disable (a check mark indicates low battery page is enabled).
2. Enter the pager number this will alert.
3. Enter a message. Once set, the function automatically alerts the selected pager when the batteries get low.

Example:

IF: Button Butler with ID of 5 has low batteries

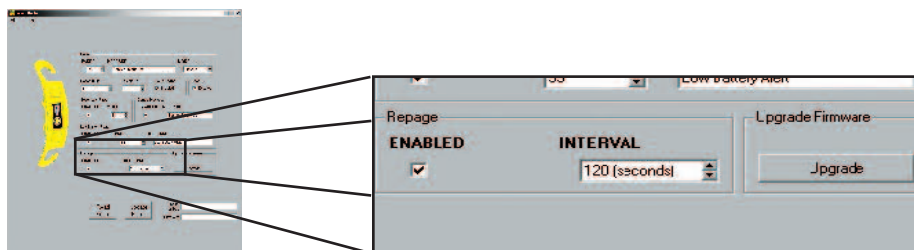
THEN: Pager will display "Low Battery 5"

Repaging

This feature will enable or disable the re-paging feature. When the "Service" button is pressed, the Butler transmitter will resend the message to the pager (at pre-set time intervals) until the page is cleared.

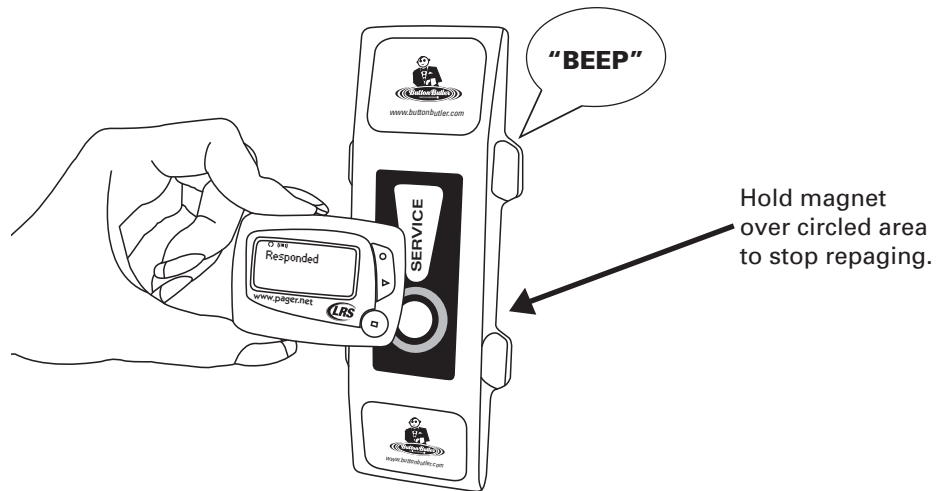
To set Re-paging:

1. Click on **Enabled** box to enable or disable (a check mark indicates input is enabled).
2. Enter a **Repage** time. Must be 10 seconds or more.



Stop Re-paging

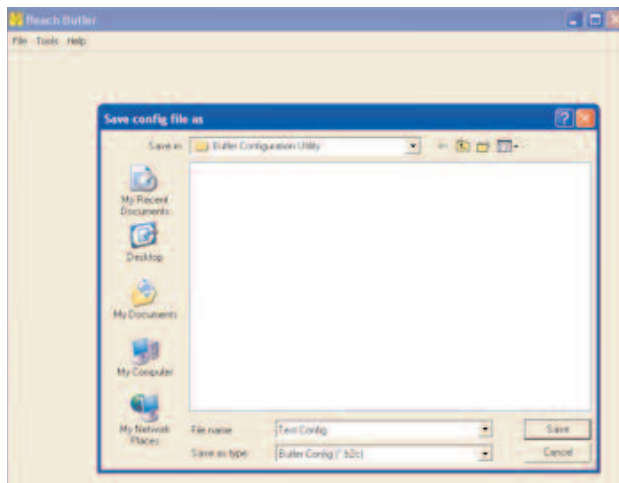
To stop repaging, hold the pager magnet over the Service button for 1 second. User will hear a beep to indicate repaging has ended.



Save a Configuration

This feature allows the user to store a read or modified configuration from Button Butlers. File will save to a .b2c extension. To save a Configuration:

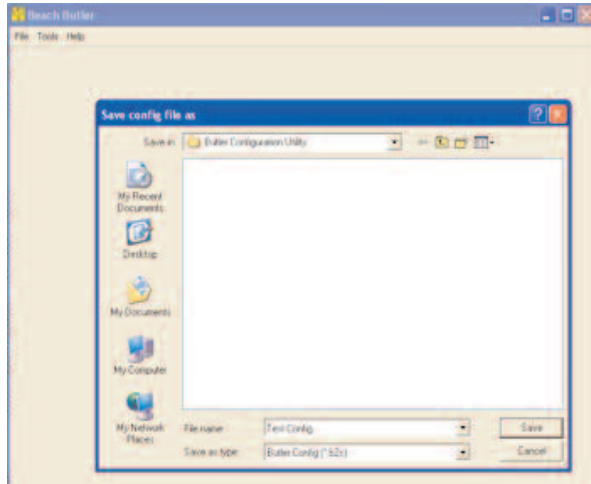
1. Select **File, Save Configuration**.
2. Enter file name, select destination, and **Save**.




Load an Existing Configuration

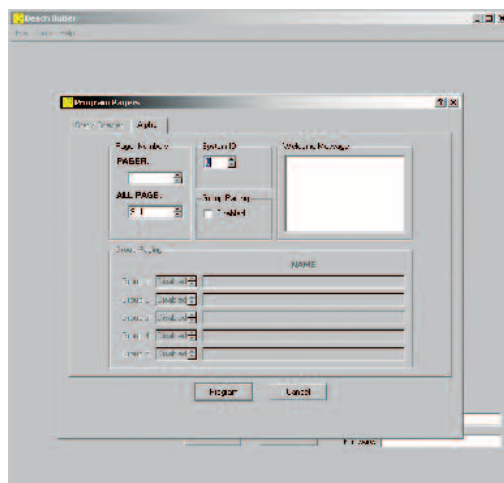
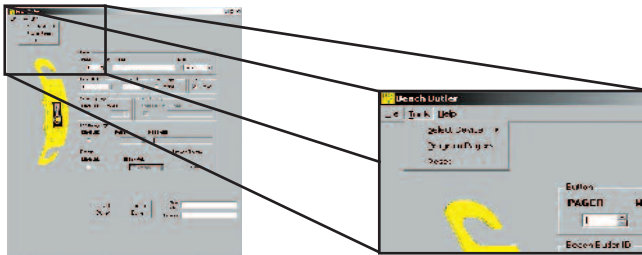
This feature allows the user to load a preset configuration to Button Butler. To Load:

1. Select **File, Load Configuration**.
2. Select configuration file and **Open**.
3. Press **Update Unit** (USB cable must be attached to the Button Butler).



Programming Pagers

 **Note:** Before programming a pager, make sure the pager is turned OFF.
The Button Butler does not operate with Star Pagers.



Programming Individual Alpha Pagers

1. Select from the menu **Tools**, then **Program Pagers**.
2. Select the **Alpha** tab.
3. Set the **System ID**. Recommended System ID = 0.



Note: Must match System ID of Button Butler

4. Set the **Pager Number** and the **All Page** number. (All Page is typically 911)
5. Remove the battery from the pager.
6. Replace the battery and wait for the screen display to go blank (after about 10 seconds).
7. Press **Program** to program the pager. A message box will appear to indicate programming.
8. The pager will beep four times to indicate it is being programmed. Programming is complete when the pager stops beeping.
9. Repeat steps 3-6 to program any additional pagers.

Group Paging

1. To enable, click "**Enabled**" under Group Paging



Note: If *Group Paging* is enabled:

- 1-99 are reserved for group numbers.
- A pager number can belong to a maximum of 5 groups.
- Assigning **pager numbers** must start at 100 instead of 1.
- User may also enter optional **Group Names**.

Example:

If: Group 1 = 27, and Group Name = Sales

Then: When you select "27" (under **PAGER**) in the **Button** section of the Button Butler configuration screen, then when the "Service" button is pushed, all the pager numbers in the Sales group #27 will be paged at the same time.

To program pagers into groups:

1. Select **Tools** from the menu.
2. Select **Program Pagers**.
3. Select the **Alpha** tab.
4. Check the **Group Paging** enabled check box.
5. Under the **Group Paging** section, enter your group settings.
6. Set the **System ID**. Recommended System ID = 0.



Note: Must match System ID of **Button Butler**

7. Set the **Pager Number**



Note: Be sure that pager numbering begins at 100

8. Set the **All Page** number. (All Page is typically 911)
9. Confirm all settings before continuing.
10. Remove the battery from the pager.

11. Replace the battery and wait for the screen display to go blank (wait about 10 seconds).
12. Press **Program** to program the pager. A message box will appear to indicate programming.
13. The pager will beep four times to indicate it is being programmed. Programming is complete when the pager stops beeping.
14. Repeat steps 4-6 to program any additional pagers.

Troubleshooting

In order for your Button Butler to alert a pager, the Button Butler must be programmed on the same System ID as the pager, and the pager number must be programmed into the Button Butler.

To verify the pager's System ID:

1. Remove the battery from the pager
2. Reinsert the battery and read the display.

Example: If Pager Number = 1, Page All = 911, System ID = 0

The display will read:

- C1: [0]1 Pager Number (1)
- C2: [0]911 Page All (911)
- C3: [0]0 System ID (0)

To verify the Button Butler's System ID:

1. Plug one end of the USB to the PC and the other end to the Button Butler.
2. Open the **Butler Configurations Utility**.
3. Click the **Read Butler** button.
4. The current system ID will be displayed under **System ID**

WARRANTY

Long Range Systems, Inc. warrants this product against any defects that are due to faulty material or workmanship for a one-year period after the original date of consumer purchase. This warranty does not include damage to the product resulting from accident, misuse or improper electrical connection. This warranty is valid for 24 months following the initial purchase of the product. If this product should become defective within the warranty period, we will repair or replace with equivalent product, free of charge.

No return or replacement can be received without prior authorization and the proper

RMA Number posted to the outside of the shipping container. To receive an RMA# call an LRS office:

Germany: +49 (0) 531 2354725

Brazil: (11) 4152 8416

USA: 214.553.5308

Office Locations:

LRS Germany: Peterskamp 41, 38108 Braunschweig, Germany

LRS Brasil: Av. Dr. Yojiro Takaoka, 4384, 7o andar, Sala 704, Alphaville – CEP 06541-038, Brasil

U.S. Headquarters: Long Range Systems, Inc., 4550 Excel Pkwy, Suite 200, Addison, TX 75001

Copyright © 2008, Long Range Systems, Inc. All Rights Reserved

This document contains proprietary information of Long Range Systems, Inc. (LRS) and is intended for use only by its employees or customers. None of the material contained herein may be copied, reproduced, republished, downloaded, displayed, posted, or transmitted in any form or by any means, including but not limited to, electronic, mechanical, photocopying, recording, or otherwise without the prior written permission of LRS. Additional copies of this manual may be obtained by contacting LRS.

Screen displays, keyboard layouts, hardware descriptions, or software are proprietary to LRS and are subject to copyright and other intellectual property rights of LRS and shall be treated in accordance with the previous paragraph.

All attempts have been made to make the information in this document complete and accurate. LRS is not responsible for any direct or indirect damages or loss of business resulting from inaccuracies or omissions. Specifications and other information contained within this document are subject to change without notice.